

Resilient Cities October Update

30 October 2013



New Resilient Cities Congress Dates

29 - 31 May 2014

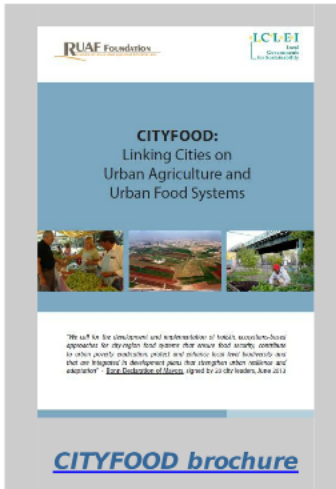
at Gustav Stresemann Institut in Bonn, Germany

4 weeks left to submit your contribution!

closing 30 Nov 2013

Call for
contributions

Proposals for the 2014 congress are being accepted now for presentations, panels, workshops, posters, Reality Check Workshops, & co-events on the [call for contributions page](#).



First activities of the CITYFOOD Network

A successful webinar on urban food policy held on World Food Day marked the first informational event of the recently established CITYFOOD Network.

The ICLEI-RUAF Foundation initiative was established during the Urban Food Systems Forum at Resilient Cities 2013 in response to the challenges outlined for implementing resilient city-region food systems and urban and peri-urban agriculture.

For more information on what we offer and how you can join as a partner or city, please see our latest [CITYFOOD brochure](#) or browse our [CITYFOOD webpage](#).

Partner with us!

Would your company or organization like to support the Resilient Cities Congress in 2014? Opportunities include:

- Running a forum
- Hosting a side event
- Sponsoring a session
- Showcasing your work as an exhibitor

Find out more on our [webpage](#) and in our [congress brochure](#) or email resilient.cities@iclei.org to discuss the possibilities.

